

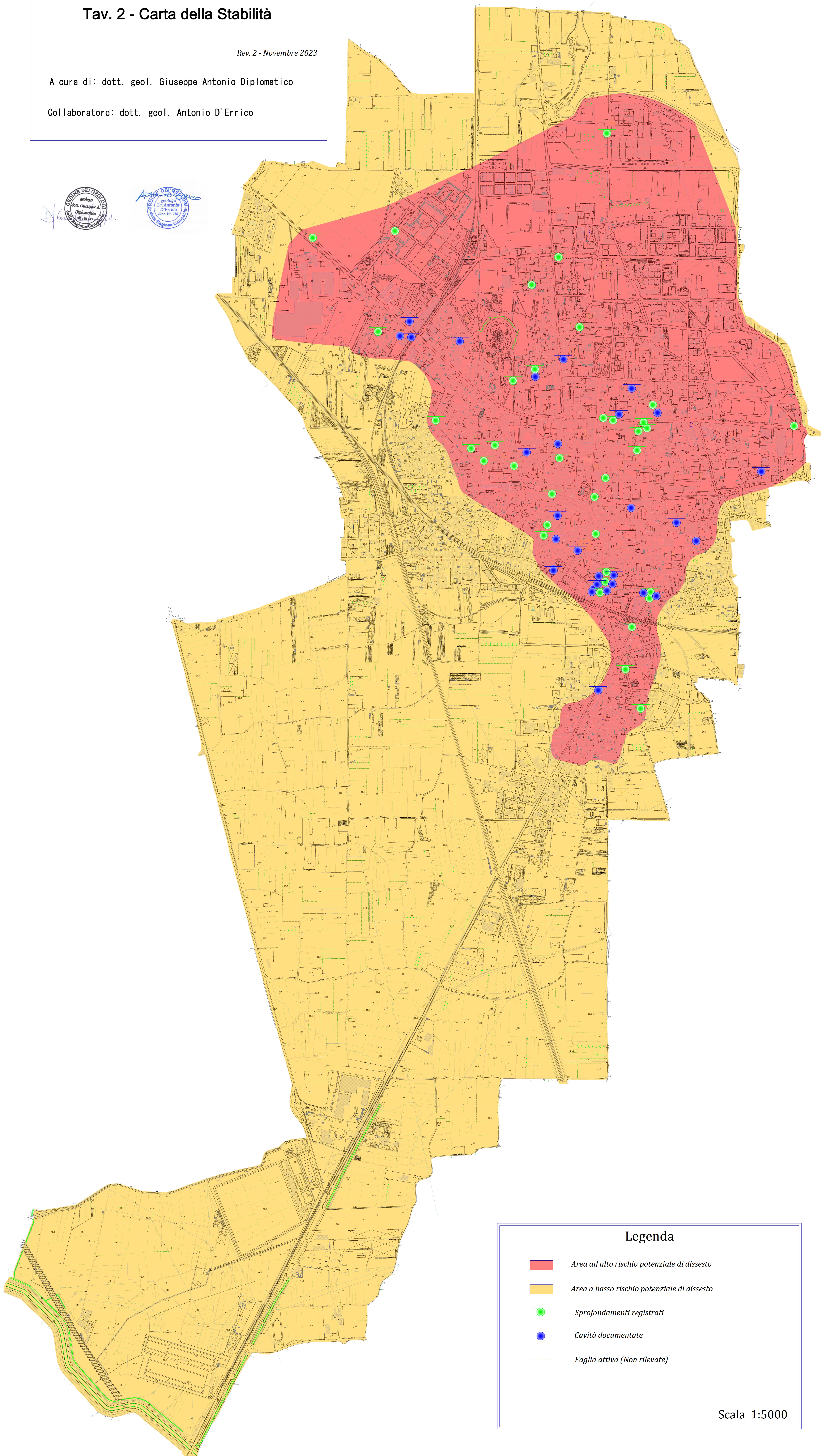
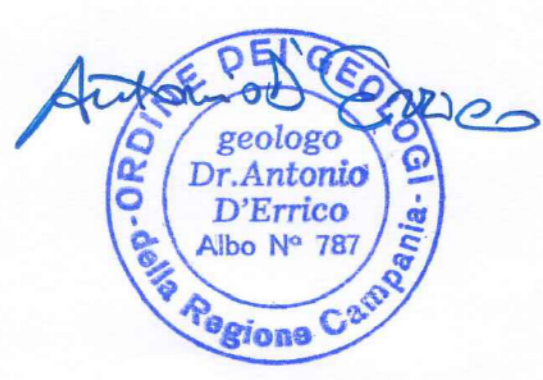
## COMUNE DI SANTA MARIA CAPUA VETERE

### Tav. 2 - Carta della Stabilità

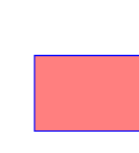
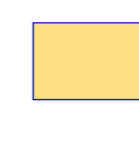



Rev. 2 - Novembre 2023

A cura di: dott. geol. Giuseppe Antonio Diplomatico

Collaboratore: dott. geol. Antonio D'Errico



#### Legenda

-  Area ad alto rischio potenziale di dissesto
-  Area a basso rischio potenziale di dissesto
-  Sprofondamenti registrati
-  Cavità documentate
-  Faglia attiva (Non rilevate)

Scala 1:5000